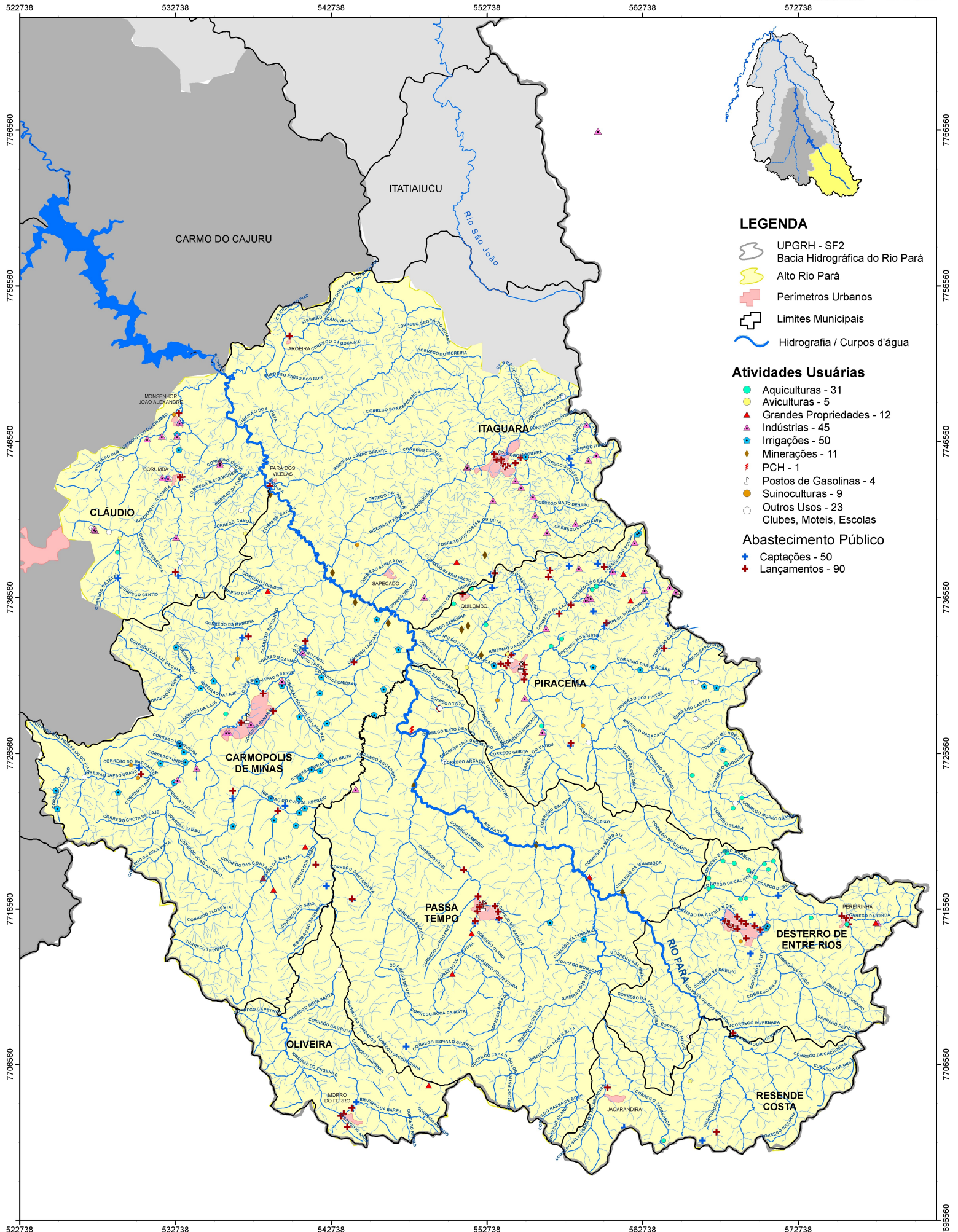








ATIVIDADES INDUSTRIAIS CLASSIFICADAS COMO USUÁRIOS SIGNIFICANTES NA REGIÃO DO ALTO RIO PARÁ





LEGENDA

-  UPGRH - SF2
-  Bacia Hidrográfica do Rio Pará
-  Alto Rio Pará
-  Perímetros Urbanos
-  Limites Municipais
-  Hidrografia / Corpos d'água

Atividades Usuárias

-  Aquiculturas - 31
-  Aviculturas - 5
-  Grandes Propriedades - 12
-  Indústrias - 45
-  Irrigações - 50
-  Minerações - 11
-  PCH - 1
-  Postos de Gasolinas - 4
-  Suinoculturas - 9
-  Outros Usos - 23
-  Clubes, Moteis, Escolas

Abastecimento Público

-  Captações - 50
-  Lançamentos - 90

